

Representar la Hora (I)

Dibuje en cada reloj la hora que aparece debajo.

1.



12:15

2.



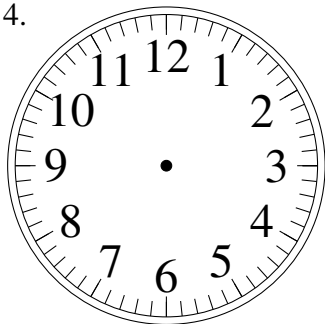
2:15

3.



7:30

4.



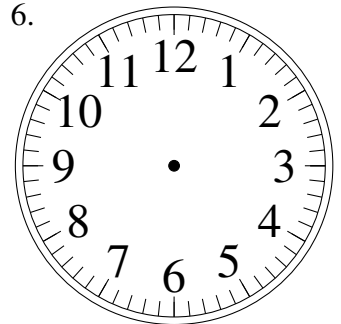
9:15

5.



3:45

6.



8:15

7.



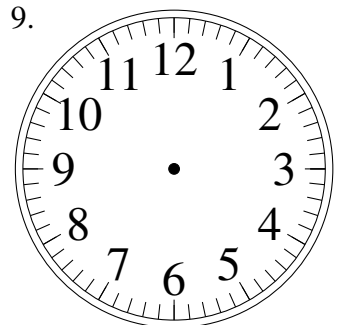
3:15

8.



4:45

9.



3:00

10.



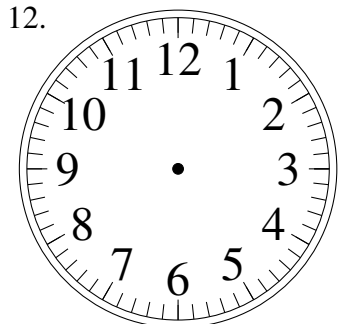
4:15

11.



1:45

12.

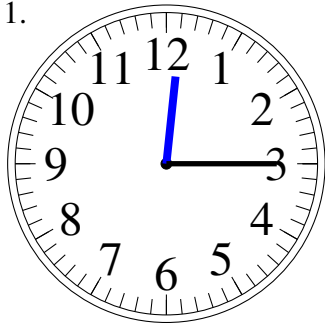


7:30

Representar la Hora (I) Respuestas

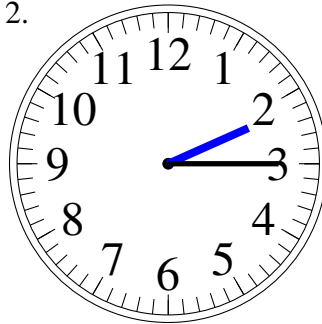
Dibuje en cada reloj la hora que aparece debajo.

1.



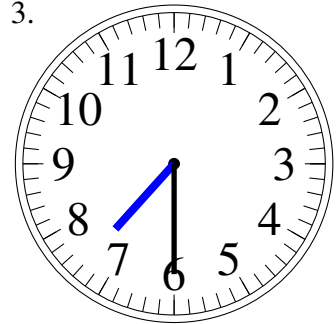
12:15

2.



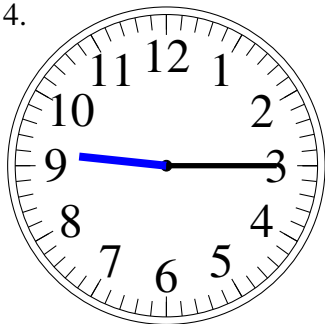
2:15

3.



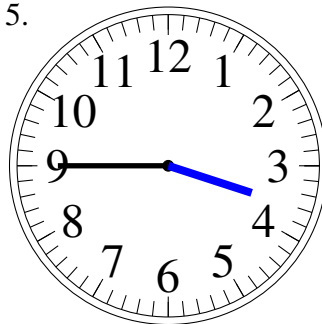
7:30

4.



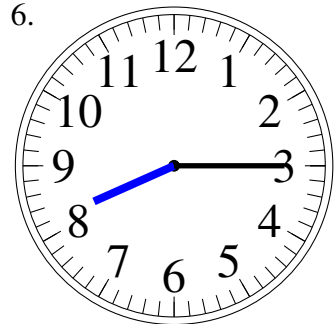
9:15

5.



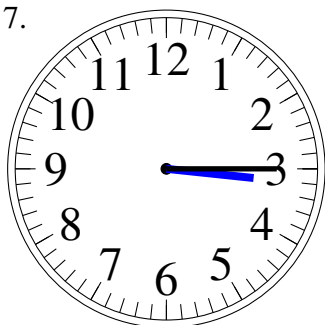
3:45

6.



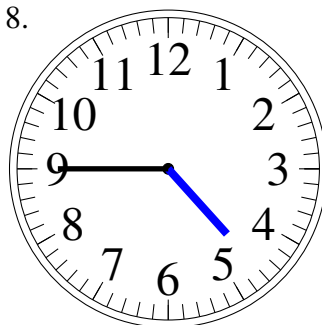
8:15

7.



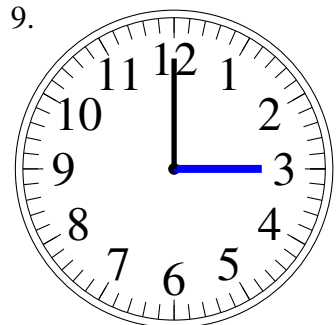
3:15

8.



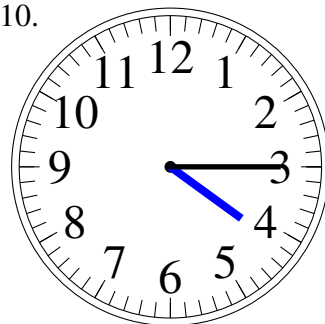
4:45

9.



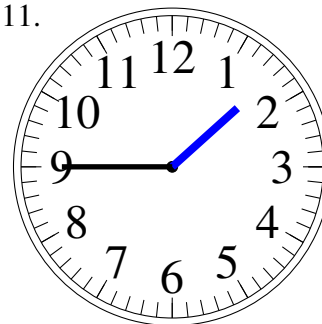
3:00

10.



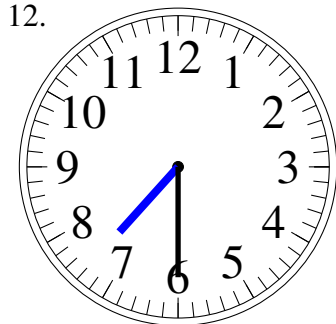
4:15

11.



1:45

12.



7:30