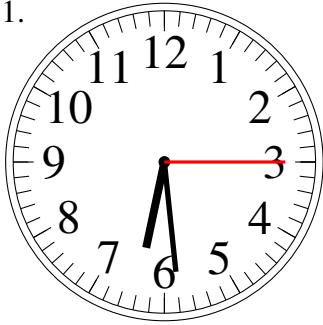


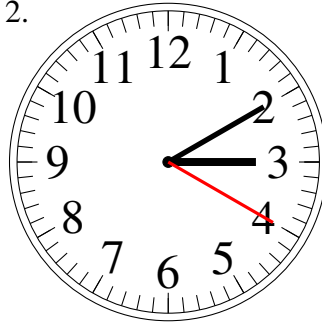
Leer Relojes Analógicos (I)

Lea y escriba la hora en cada reloj.

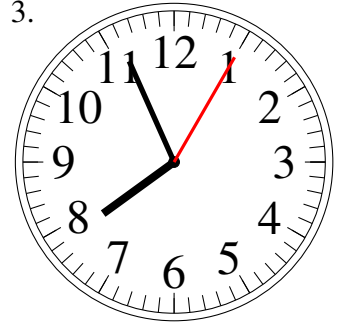
1.



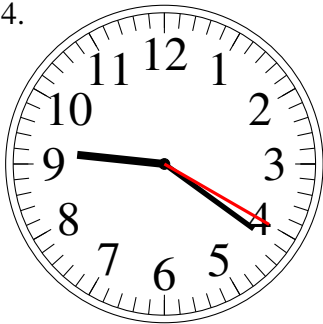
2.



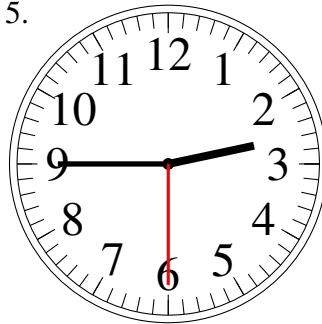
3.



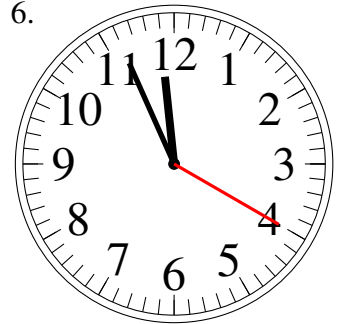
4.



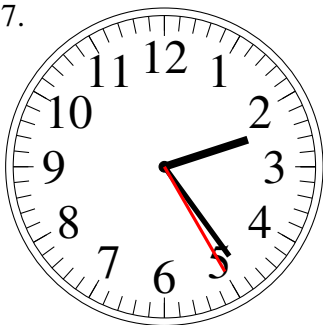
5.



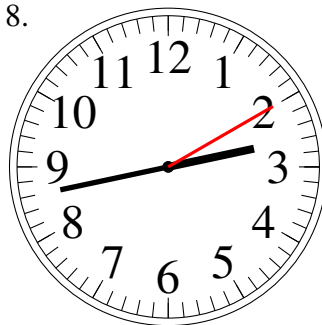
6.



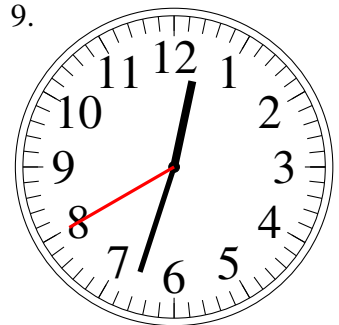
7.



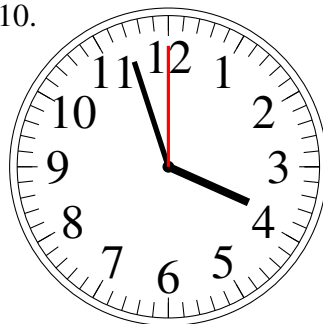
8.



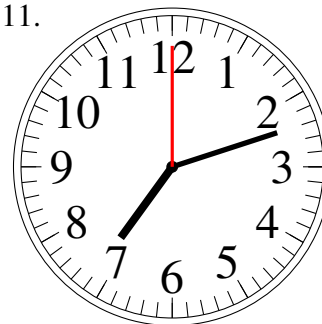
9.



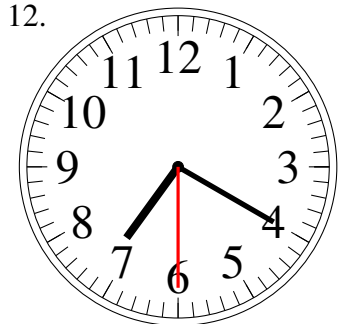
10.



11.



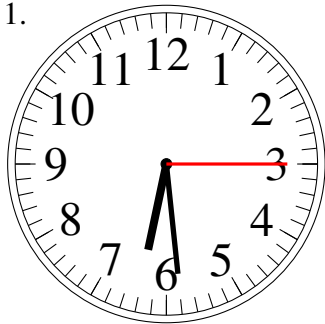
12.



Leer Relojes Analógicos (I) Respuestas

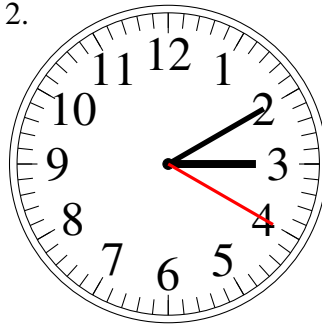
Lea y escriba la hora en cada reloj.

1.



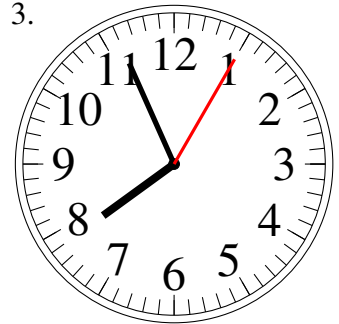
6:29.15

2.



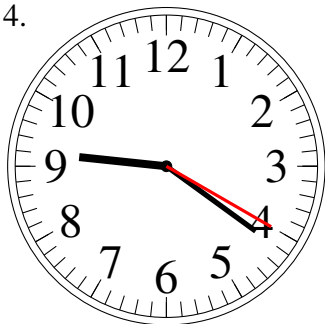
3:10.20

3.



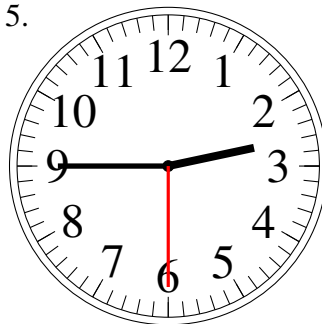
7:56.05

4.



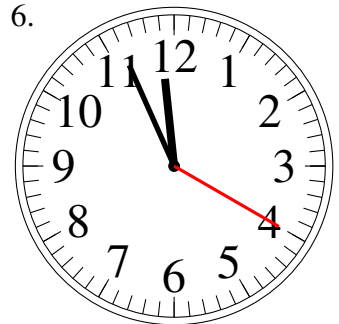
9:21.20

5.



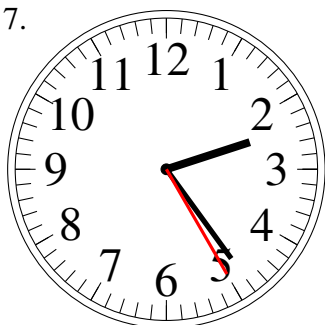
2:45.30

6.



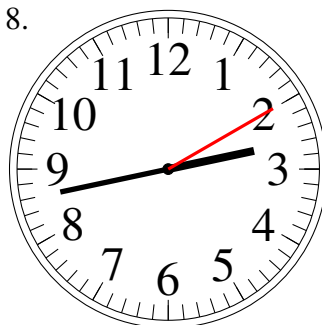
11:56.20

7.



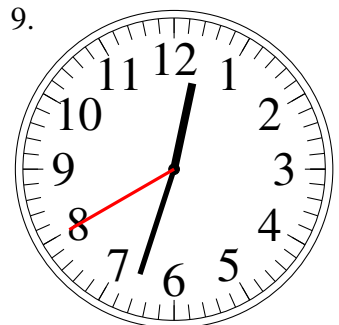
2:24.25

8.



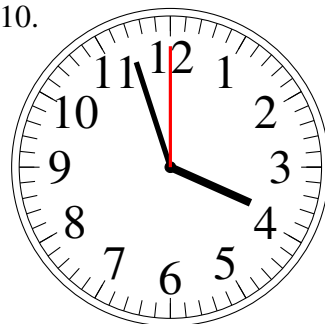
2:43.10

9.



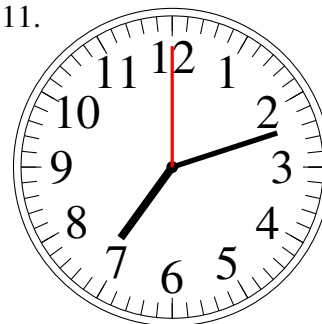
12:33.40

10.



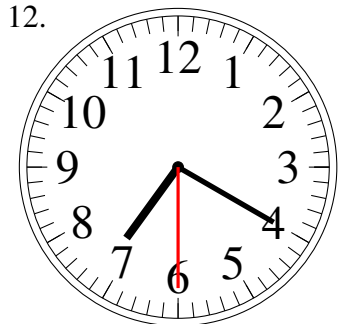
3:57.00

11.



7:12.00

12.



7:20.30