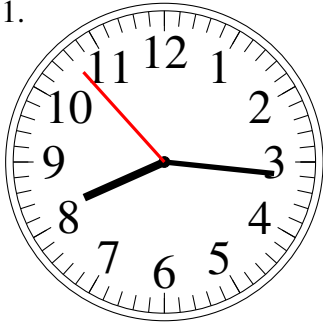


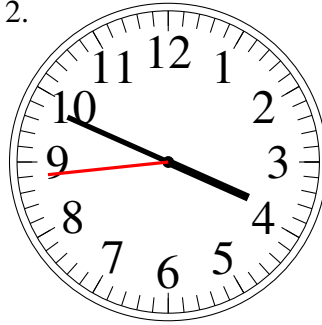
Leer Relojes Analógicos (I)

Lea y escriba la hora en cada reloj.

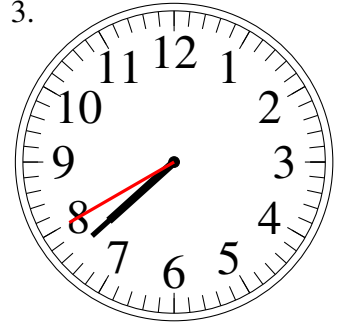
1.



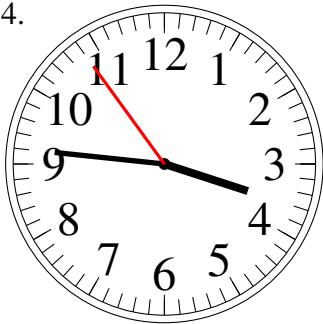
2.



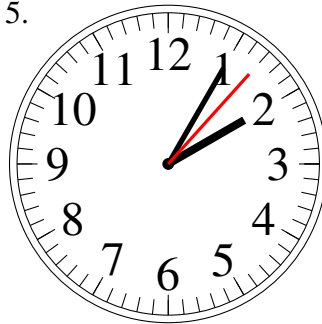
3.



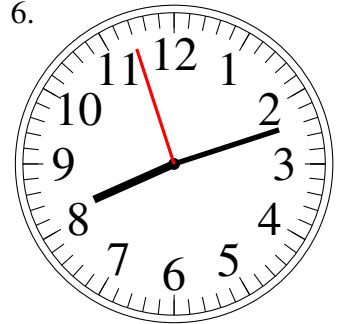
4.



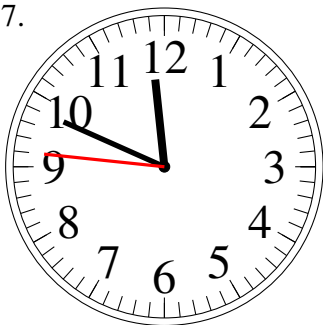
5.



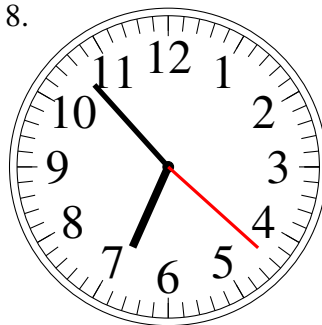
6.



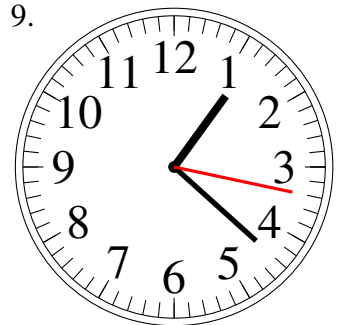
7.



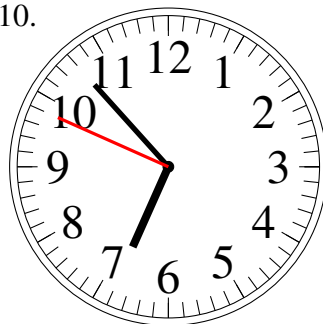
8.



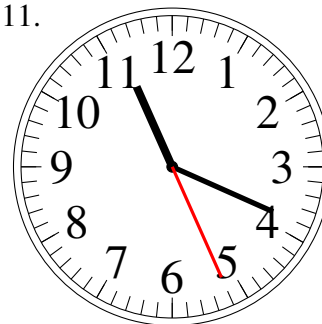
9.



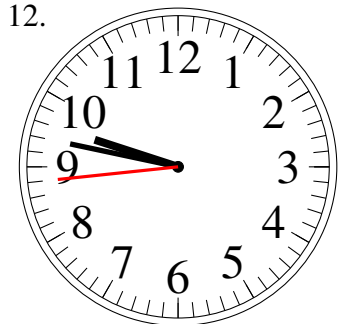
10.



11.



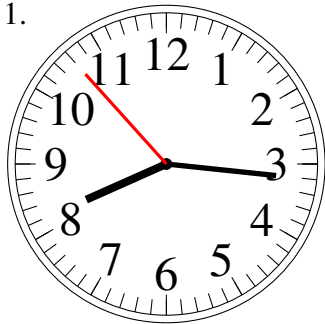
12.



Leer Relojes Analógicos (I) Respuestas

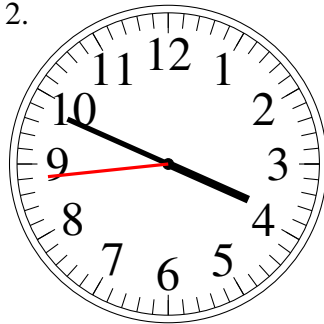
Lea y escriba la hora en cada reloj.

1.



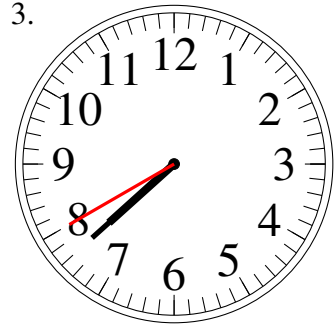
8:16.53

2.



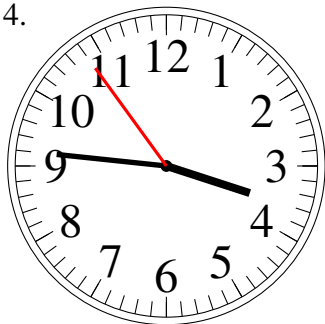
3:49.44

3.



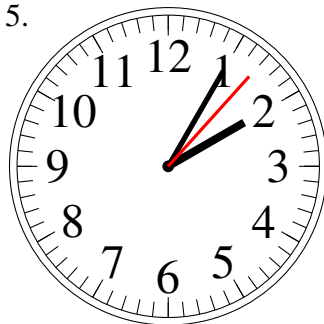
7:38.40

4.



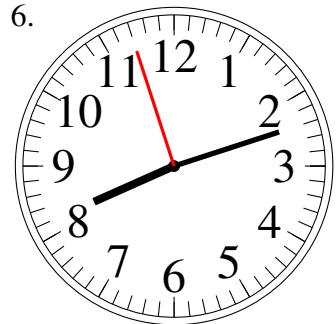
3:46.54

5.



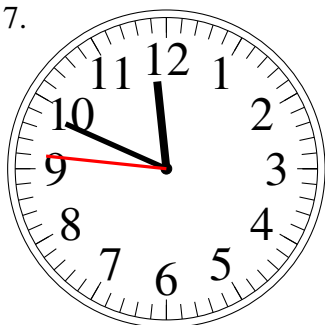
2:05.07

6.



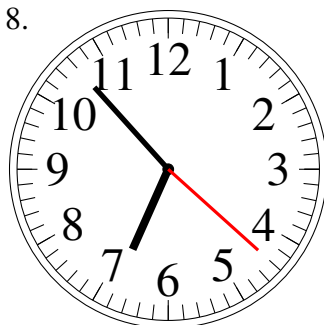
8:12.57

7.



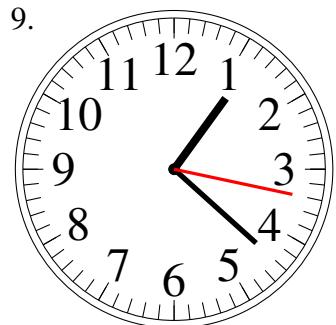
11:49.46

8.



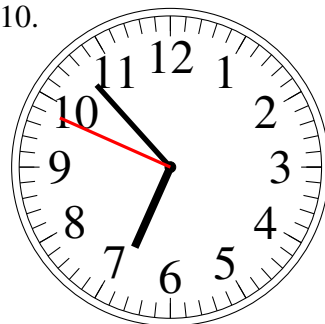
6:53.22

9.



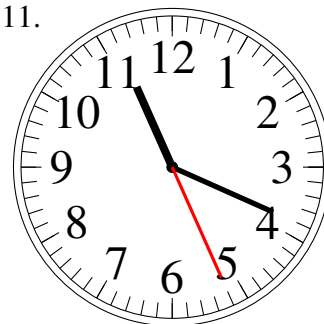
1:22.17

10.



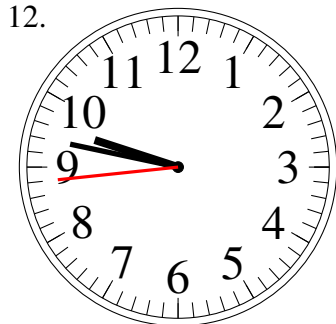
6:53.49

11.



11:19.26

12.



9:47.44