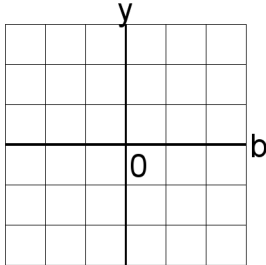


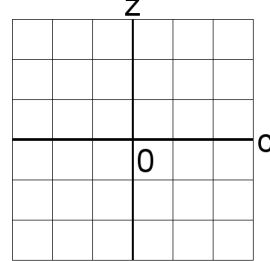
Graficar Sistemas Lineales (A)

Resuelva cada sistema de ecuaciones graficando.

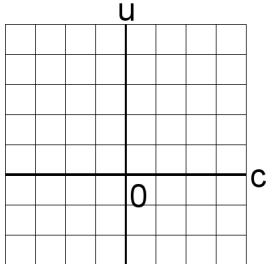
1. $3b + 2y = -1$
 $6b + 2y = -1$



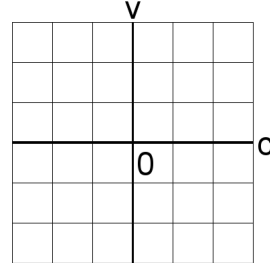
4. $6c + 2z = -2$
 $c + 4z = 7$



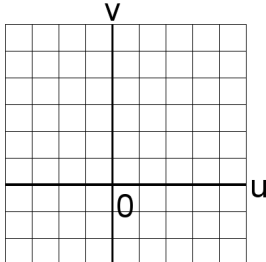
2. $4c + 5u = 20$
 $6c + 5u = 20$



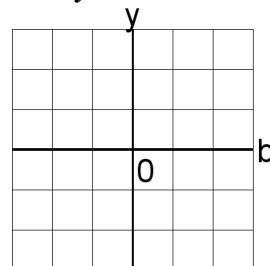
5. $3c + 4v = 5$
 $5c + 6v = 7$



3. $4u + 6v = 27$
 $4u + 2v = 7$



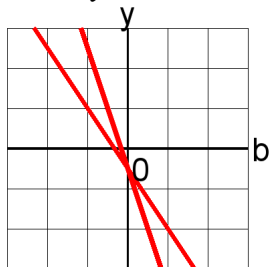
6. $2b + 6y = -4$
 $b + 6y = -2$



Graficar Sistemas Lineales (A) Answers

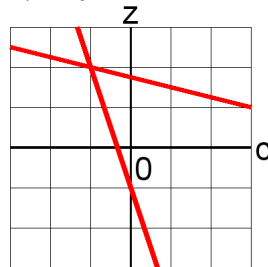
Resuelva cada sistema de ecuaciones graficando.

1. $3b + 2y = -1$
 $6b + 2y = -1$



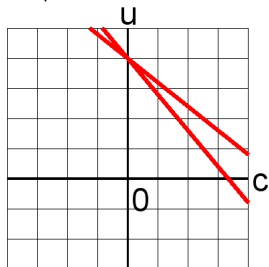
$b = 0, y = -\frac{1}{2}$

4. $6c + 2z = -2$
 $c + 4z = 7$



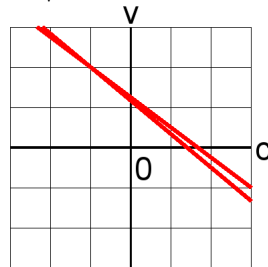
$c = -1, z = 2$

2. $4c + 5u = 20$
 $6c + 5u = 20$



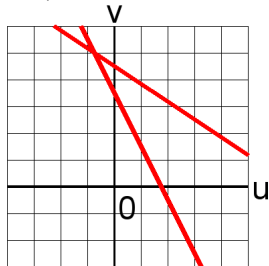
$c = 0, u = 4$

5. $3c + 4v = 5$
 $5c + 6v = 7$



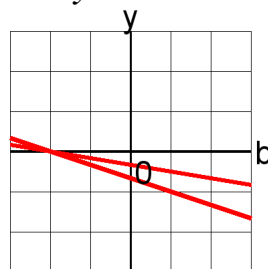
$c = -1, v = 2$

3. $4u + 6v = 27$
 $4u + 2v = 7$



$u = -\frac{3}{4}, v = 5$

6. $2b + 6y = -4$
 $b + 6y = -2$



$b = -2, y = 0$